

REGIONAL DAY SCHOOL

Ms. Colleen Henry, Principal
Mr. Hani Ileya, Assistant Principal

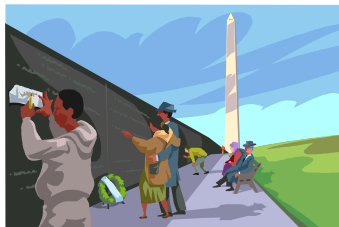
November 2009



Regional Day School
425 Johnston Ave
Jersey City, NJ 07304

Phone: 201-915-6165
Fax: 201-433-4401

“Ideas for Developing Speech and Language in the Home Environment” will be the topic for this month’s PTA Meeting!



Sun	Mon	Tue	Wed	Thu	Fri	Sat
1	2	 3 Election Day Schools Closed	4	5 Schools Closed	6 Schools Closed	7
8	9	10	 11 Veteran’s Day Schools Closed	12	13	14
15	16	17	18 PTA Meeting 6:30PM Speech	19 End of the 1st Cycle	20	21
22	23	24	25 Half Day Session 12:45 Dismissal	 26 THANKSGIVING BREAK SCHOOLS CLOSED	27	28
29	30					