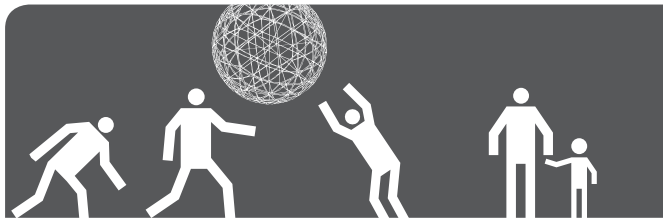


Community Evening at Liberty Science Center!

explore for free

Community Evenings provide a special opportunity for Abbott district families to explore the Center for free with other families from their community.

We hope you can join us!



date

FEB 10.2010 > Wednesday

time

5:30 - 9:00pm

exhibitions



> Infection Connection

> I Explore

> Energy Quest

> Eat and Be Eaten*

> Our Hudson Home

> Breakthroughs*

> Communication*

> Skyscraper!
Achievement and Impact



* snse - Check out our **SNSE (Science Now, Science Everywhere)** mobile-phone enabled interactive exhibits! (Mobile phone required)

Major funding provided by National Science Foundation 

movies

IMAX® Dome Theater

Mysteries of the Great Lakes

6:00pm

The Alps

7:00pm

Mysteries of the Great Lakes

8:00pm

3D show

Planet You

5:45, 6:30, 7:15 and 8:00pm

rsvp

Schools arranging bus transportation for families must register with Lauren Rose at 201.253.1259 or lrose@lsc.org no later than five days prior to the Community Evening date. Families or individuals traveling by car or public transportation do not need to call ahead.

Theater tickets are free on a first-come, first-served basis at the Box Office beginning at 5:15pm. Tickets may be limited to one show per person.

Food will be available to purchase in Café Skylines until 8:00pm.

liberty
science
center



She's B-a-ack

Come face to face with the largest and best-preserved *Tyrannosaurus rex* ever unearthed, and learn about her life, preservation and history with awesome interactive displays.



This exhibition was created by The Field Museum, Chicago, and made possible through the generosity of McDonald's Corporation.